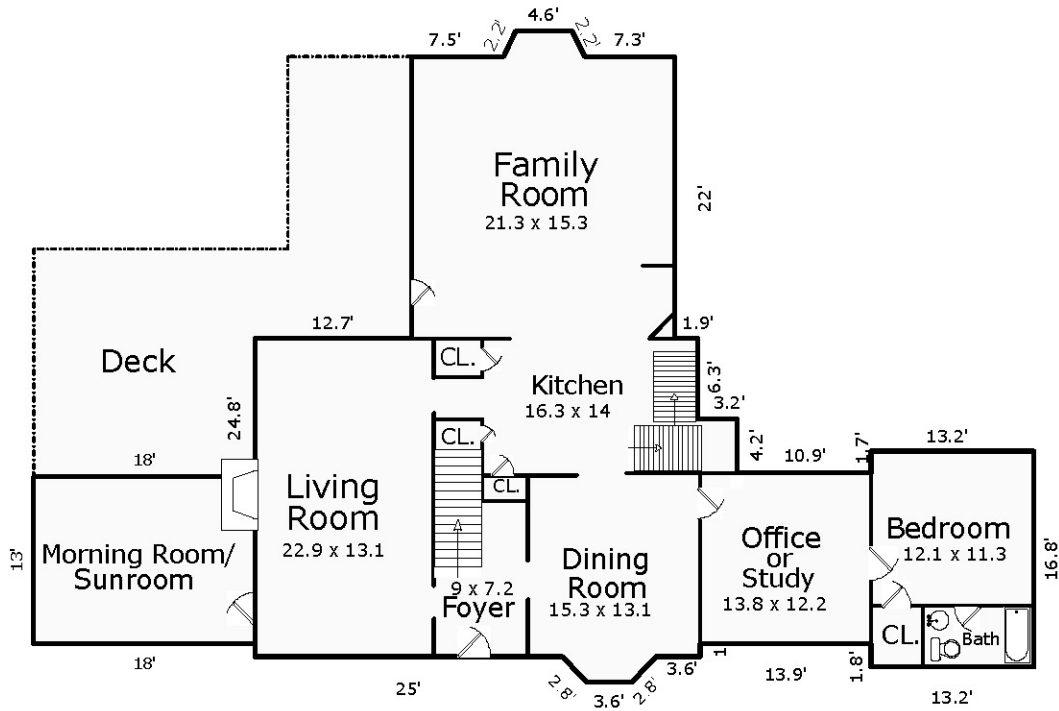
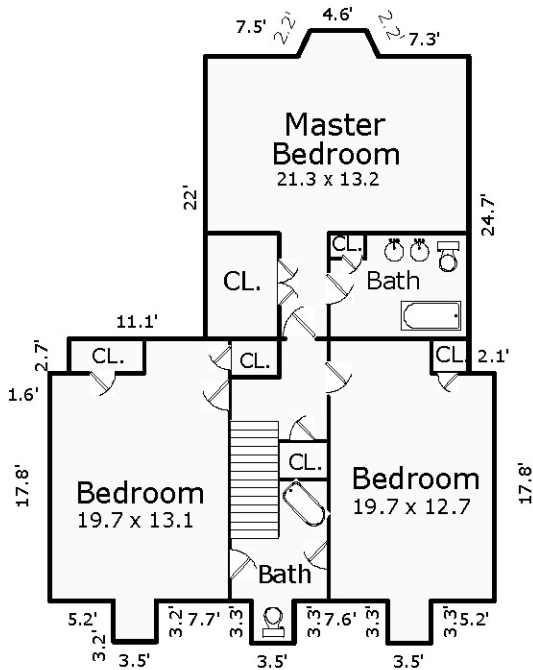


3807 Sulgrave Road Floor Plan

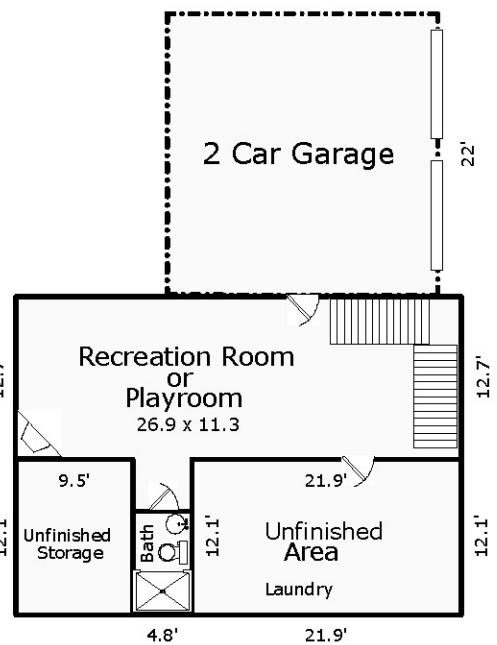


Main Level

Main Levels are 3291 Sq.Ft.
 Finished Basement is 518 Sq.Ft.
 Total Finished Area is 3809 Sq.Ft.
 Unfinished Basement is 380 Sq.Ft.
 Sunroom is included in Finished Area.



Upper Level



Walk-Out Lower Level